

Area Assessment Maps

Bradesco Bank 2026 Delineated Assessment Area

Bradesco Bank has one assessment area located in South Florida. The bank defined its assessment area in accordance with the requirements of the CRA regulation. The assessment area includes the Miami-Miami-Beach-Kendall (Miami), FL Metropolitan Division (MD), which includes all of Miami-Dade County and the Fort Lauderdale-Pompano Beach-Deerfield beach (Fort Lauderdale), which includes all of Broward County. The Miami and Fort Lauderdale MDs are two of three MDs located in the Miami-Fort Lauderdale-West Palm Beach FL Metropolitan Statistical Area (MSA). Hence, our primary efforts are strongly committed to fulfilling the needs of Miami-Dade County and Broward County.

The assessment areas served by this bank have been delineated by taking into consideration where our bank is actively involved in lending of commercial and residential mortgages including HMDA related loans. The decision was made, bearing in mind the Community Reinvestment Act regulatory requirements; as well as other requirements or prohibitions imposed by the Equal Credit Opportunity Act, Fair Lending practices and any other law and their implementing regulation, prohibiting discrimination and redlining. Areas comprised within the boundaries are considered included in the delineated community.

We recognize the importance of determining and meeting the needs of our delineated community, including those of credit worthy low- and moderate-income individuals. We also extend loans to credit-worthy borrowers who do not reside in the delineated lending area. The boundaries are defined as follows:

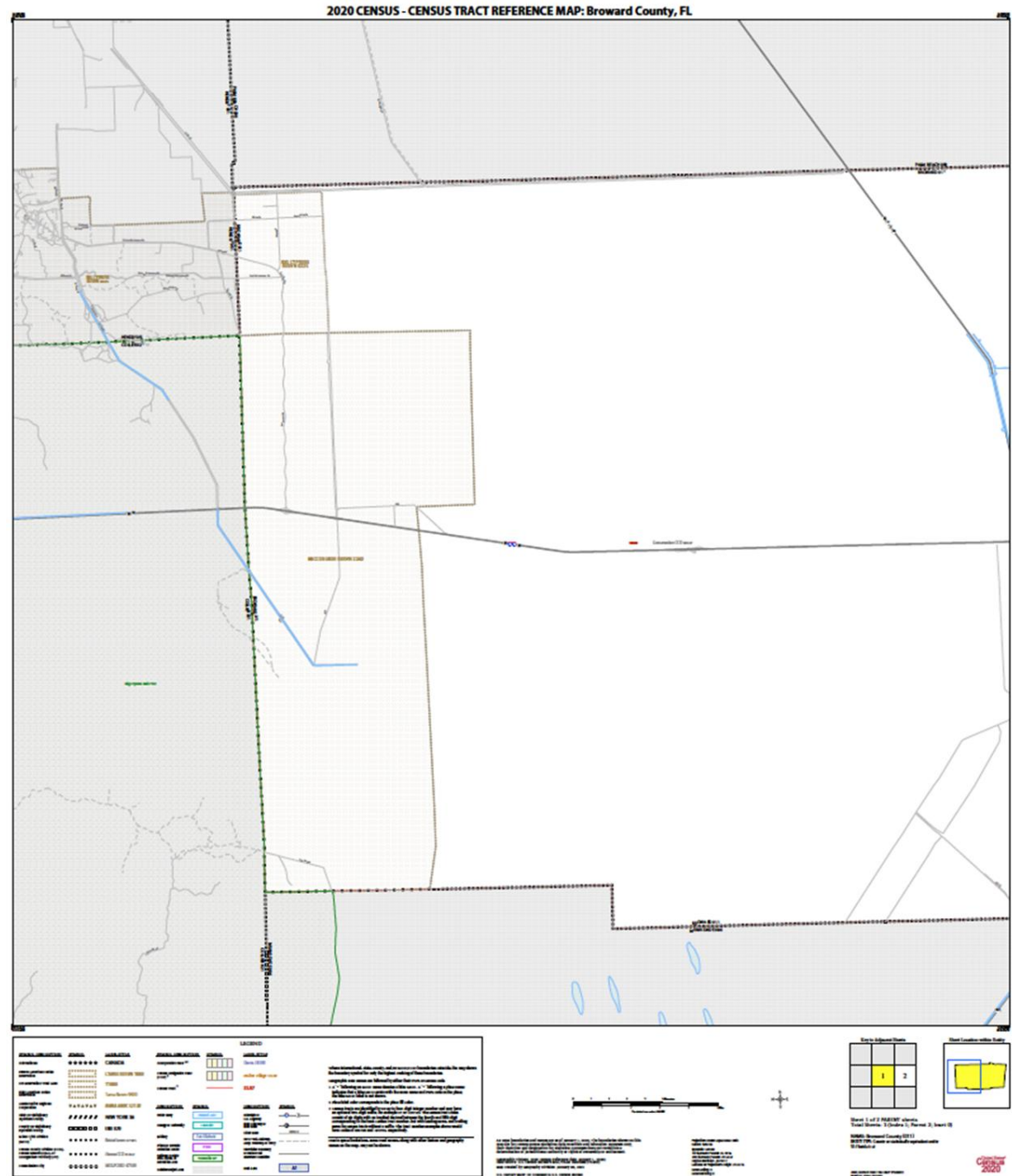
MIAMI-DADE COUNTY, FLORIDA

The Miami-Dade County assessment area consists of all census tracts in Miami-Dade County and is located along the southern tip of Florida. The county is bordered to the north by Broward County, to the east by the Atlantic Ocean, to the south by Monroe County, and to the west by Monroe and Collier Counties. Some of the largest incorporated municipalities within the county are Miami, Miami Beach, Hialeah, North Miami, North Miami Beach, Coral Gables, Pinecrest, Homestead, South Miami, and Miami Lakes. The eastern and northern portions of the county are primarily urban, with the western and southern portions primarily rural. Most of the western portion of the county lies in the Everglades National Park.

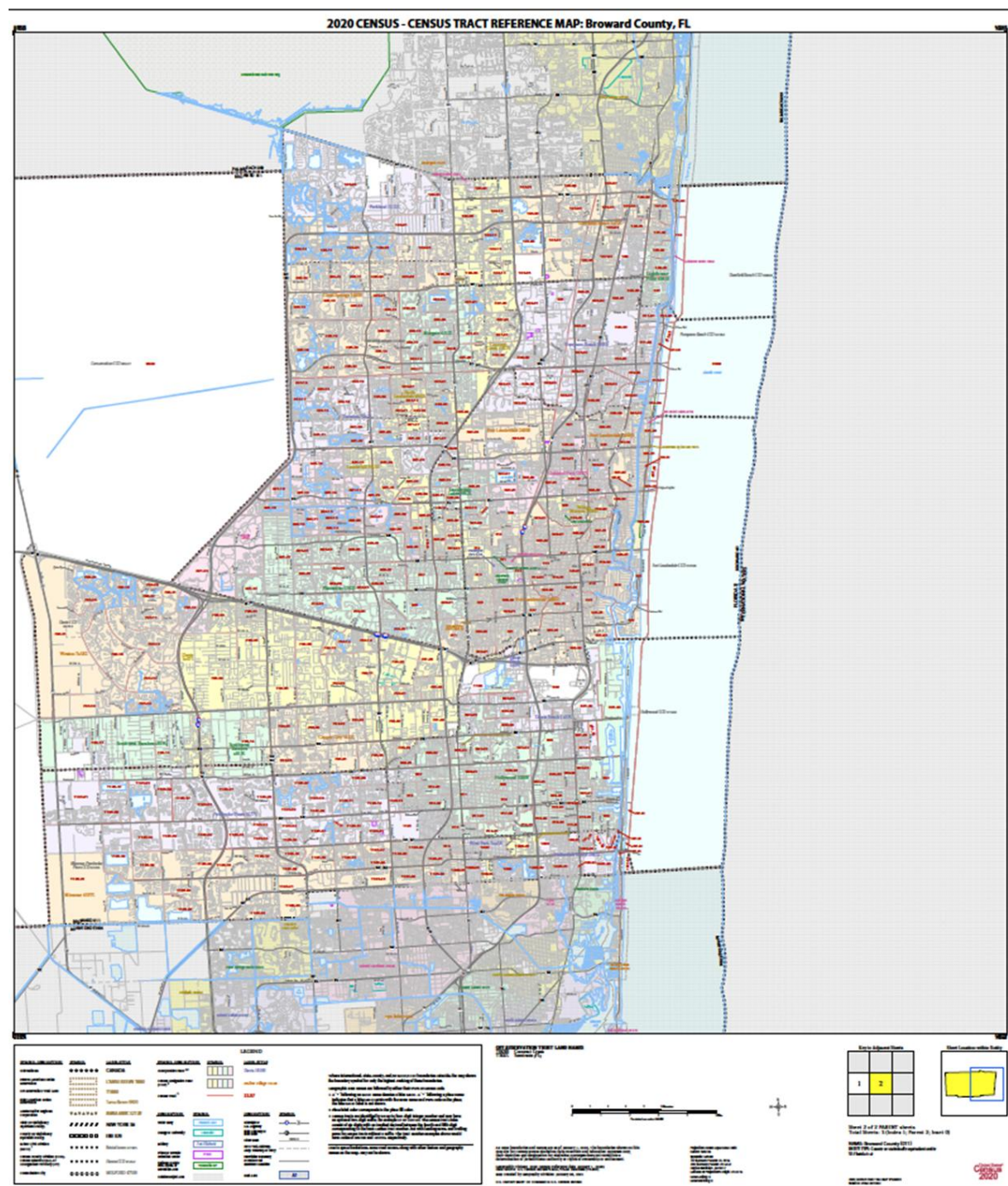
BROWARD COUNTY, FLORIDA

Broward County is located along the southeastern coast of Florida. The county is bordered to the north by Palm Beach County, to the east by the Atlantic Ocean, to the south by Miami-Dade County, and to the west by Collier County. Some of the largest cities in Broward County include Fort Lauderdale, Pompano Beach, Hollywood, Coconut Creek, and Coral Springs. The eastern portion of the county is characterized as urban, while the central portion is suburban, and the western portion is rural. The far western section of the county consists of the Big Cypress Seminole Indian Reservation and the Miccosukee Indian Reservation.

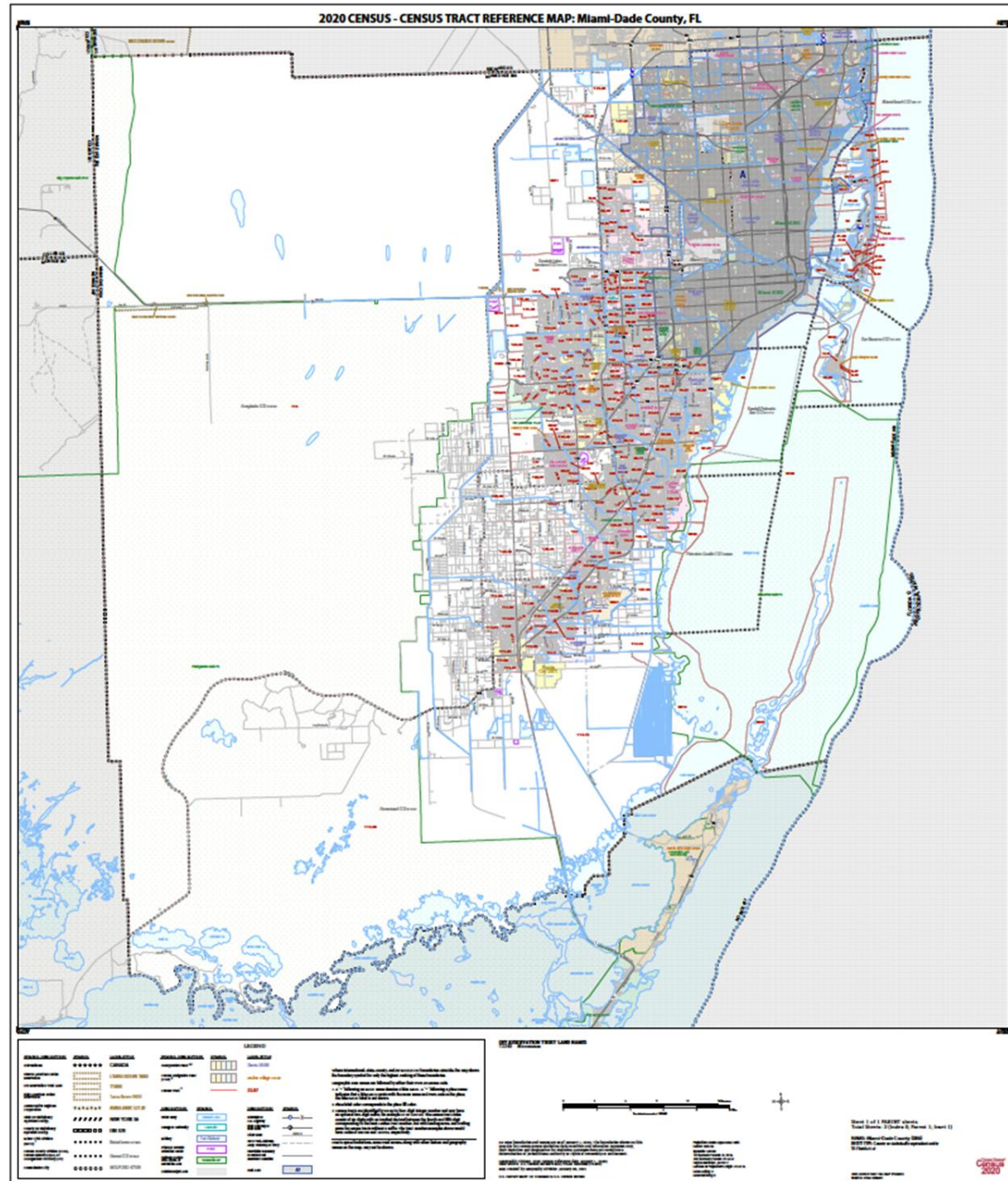
Broward 2020 Census Tracts



Broward 2020 Census Tracts



Miami Dade 2020 Census Tracts



Miami Dade 2020 Census Tracts

